



Installation

Model specific instructions

For:

- **Ducati 749 + 749S + 749R**
- **Ducati 848 + 848 EVO**
- **Ducati 999 + 999S + 999R**
- **Ducati 1098 + 1098S + 1098R**
- **Ducati 1198 + 1198S + 1198R**

These instructions are a model specific add-on to the general BoosterPlug installation instructions.

The general BoosterPlug installation instructions can be found in the "Downloads" section on the BoosterPlug.com website:

<http://www.boosterplug.com/shop/cms-downloads.html>

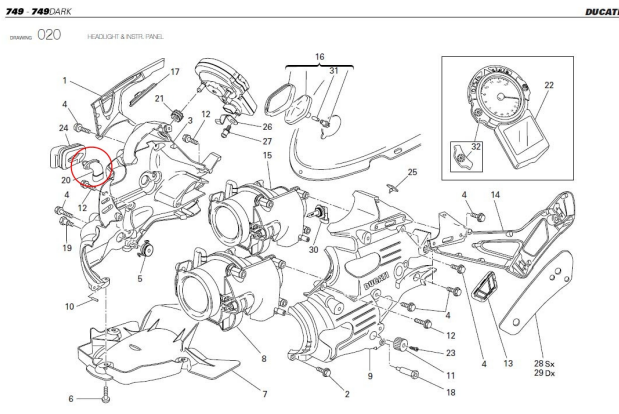
Installation Tips

- Install the BoosterPlug module as per the general installation papers.
- The pictures below should help you locate the AIT sensor where the BoosterPlug is installed.
- The AIT sensor is located inside the front fairing, close to the head lights, on the right hand side.
- The External sensor on the BoosterPlug is already in the right spot, so just secure it with a zip-tie so it's not flopping around.

Pictures

For:

- **Ducati 749 + 749S + 749R**
- **Ducati 999 + 999S + 999R**



For:

- **Ducati 848 + 848 EVO**
- **Ducati 1098 + 1098S + 1098R**
- **Ducati 1198 + 1198S + 1198R**

